

Need to Know

- Straight talk for professionals about pests and pest control products

Volume #3
 No. 9
 August 30, 2006

Reading Roach Traps for German Cockroach Management

The use of monitor traps (i.e. 'sticky traps', 'roach traps', glue boards) to detect and monitor cockroach activity is required in today's modern IPM program. Sticky traps gather cockroach activity data 24/7.

Although monitor traps are simple in design PMP's should follow these guidelines to receive the full benefit of these devices:

- Place traps as close as possible to known or suspected harborages. Use the concept of 'Zone Management' to concentrate efforts where roach activity has been observed or is highly likely.
- Place traps along roach 'routes of travel', along walls and in corners, between harborages and resource (food & water) sites.
- Place traps in areas where incoming goods that may be infested with roaches, are first received or stored in your accounts.
- Keep traps dry and clean (dust-free). Roaches weigh very little, a small film of moisture or dust will render a trap useless. If necessary, place traps inside small rodent bait boxes to avoid exposure to moisture and dust.
- Don't be stingy. Use a sufficient number of traps to accurately monitor the entire account. Traps are inexpensive for the information they collect. Once a trap has 'captured' roaches, it should be replaced.
- It is highly recommended that all traps be dated to evaluate the level of activity based on time. Record the location and level of activity. A trap placement/locator map is helpful if multiple parties service and/or inspect the roach activity.
- Wherever possible; remove traps prior to inspections by health agents or associated inspectors. The presence of captured roaches may be recorded as a violation.
- Sticky traps capture more than cockroaches. Use trap findings to monitor and record the presence of other pests such as ants, flies and spiders.

How to read roach traps

The physical presence of a cockroach on a monitor may be significant enough to initiate an action plan. However, the experienced IPM practitioner will be able to interpret more than just positive activity from their monitors.

Some examples:



This monitor indicates an active cockroach habitat to the right of the trap. Direct your attention to the right.



This monitor indicates an active cockroach habitat to the left of the trap. Direct your attention to the left.

Continue on next page



Need to Know

- Straight talk for professionals about pests and pest control products

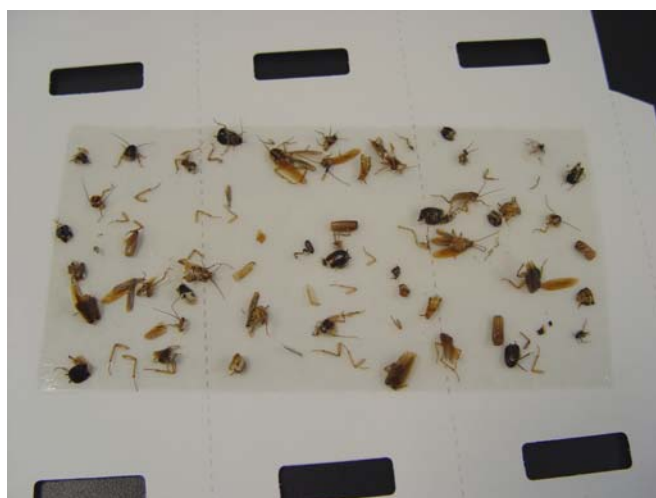
Volume 3
No. 9
August 30, 2006

Reading Roach Traps for German Cockroach Management



This monitor indicates almost exclusive immature (nymph) roach activity. This condition indicates that a nearby harborage is very heavily infested and almost 'full'. Cockroach nymphs are the first stage of the roach population that is displaced when population pressure is high and new harborages must be found. This PMP needs to address this situation quickly before more roaches displace and establish new, widespread harborages.

of activity is often observed in accounts where an effective IPM program is established and the roach infestation has been eliminated and maintained roach-free for an extended period of time. This PMP should investigate all close-by sources of incoming goods, supplies or packages that may be infested with hitch-hiking cockroaches.



This monitor indicates only fragments of cockroach bodies. In some cases only the legs of the trapped roach remain. This PMP should inspect for mice or American roaches. Both mice and American cockroaches will feed on trapped German roaches. Usually if the problem is American roaches, some of those species will be trapped as well making the ID easy.



This monitor indicates all adult activity, with mostly males trapped. This trap indicates that the PMP should assume that new cockroaches may have been introduced into the account, frequently on infested incoming goods. This type

Contributed by Joe Barile.

